



SCORPION 2™ IX

Fly-First Pitch Type Design

WARNING:

KEEP ALL FLAME AND HEAT SOURCES AWAY FROM THIS TENT FABRIC. THIS TENT MEETS THE FLAMMABILITY REQUIREMENTS OF CPAI-84. THE FABRIC MAY BURN IF LEFT IN CONTINUOUS CONTACT WITH ANY FLAME SOURCE. THE APPLICATION OF ANY FOREIGN SUBSTANCE TO THE TENT FABRIC MAY RENDER THE FLAME-RESISTANT PROPERTIES INEFFECTIVE.

Snugpak LTD
Waterloo Mills, Howden Road
Silsden, West Yorkshire
BD20 0HA, England

Tel: +44 (0) 1535 654479 Fax: +44 (0) 1535 652503

WWW.SNUGPAK.COM

Snugpak® products are exclusively distributed in North & South America by:
PROFORCE EQUIPMENT, INC.

WWW.PROFORCEEQUIPMENT.COM

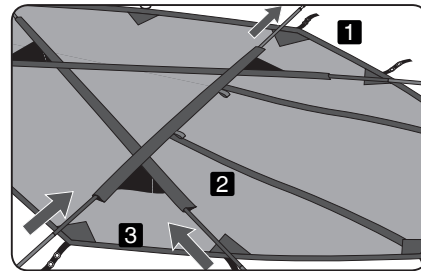
WWW.SNUGPAKUSA.COM

Assembly Instructions for SCORPION 2™ IX

-  x2 Black Tip (Angled)
-  x1 Grey Tip (Straight)
-  x16 Alloy Stakes

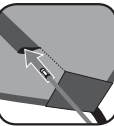
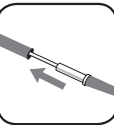
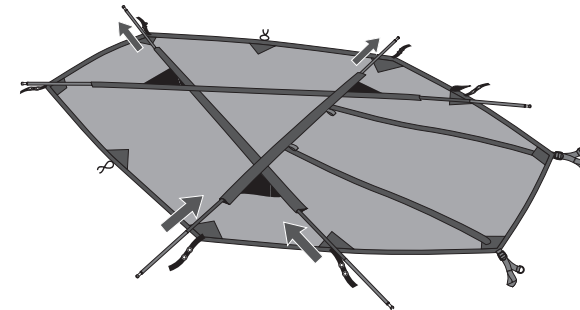
Pole Placement

1. Insert one Black Tip Angled Pole with Black section to Black trim edging.
2. Insert the other Black Tip Angled Pole with Black section to Black trim edging.
3. Insert the Grey Tip Straight Pole with Grey section to Grey trim edging.



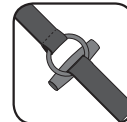
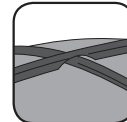
Additional Ultralight Alloy Original Stakes can be purchased separately. Aftermarket stakes can also be used with this tent whether it be with the loop webbing or through the secondary grommet available.

1



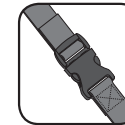
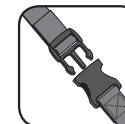
- a. Take out the Fly (Outer Tent) and unfold and spread it out.
- b. Assemble Pole Sections - Carefully unfold the pole sections and allow them to slide together by inserting within one another.
- c. Insert the poles into the pole sleeve channels
(we recommend to always push poles through, do not pull through sleeve channels).

2



- a. Insert the tent pole ends into the grommets in the corresponding webbing straps. Once all the pole ends are inserted into the grommets the fly should now stand erected.
- b. The pole channels and poles should intersect for proper form, support and structure.
- c. Now unzip the door and open it to gain access to the inside of the Fly (Outer Tent)
- d. Take the Inner Tent and line up the Door and vents and start to attach the toggle to the corresponding supporting ring on the Fly *(recommend one start from the back and work their way out from the main door and vestibule)*

3



- a. Once the Inner Tent is connected with the Fly by all the Toggle and Ring attachments, then click all the side release buckles together.
- b. Then take the Ultralight Alloy Stakes that came with the tent and run them through the loop of the webbing with the grommets and stake down accordingly.
- c. Once the tent is Staked out / down then adjust the tension of the Side Release buckles webbing of the Inner tent to achieve the desired result
(Note: there is a secondary grommet visible on webbing strap for different stakes if needed).

ANCHOR HOLE INSTRUCTIONS

Our tents are designed for use in many different regions and seasons, from Summer in hot countries to Winter in extreme climates, and the temperatures and humidity can vary dramatically. Whilst not visibly noticeable, this will cause the poles and the fabric to expand or contract slightly.

The anchor holes include two holes to allow for small changes in size. It should always be possible to get the poles into at least one of the holes. There is no correct hole (and it does not need to be the same hole on either side.)

